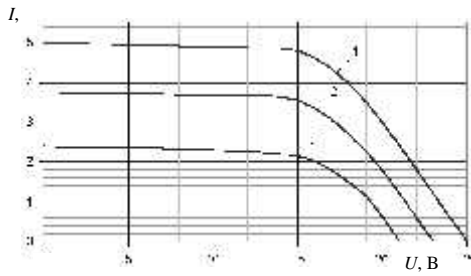
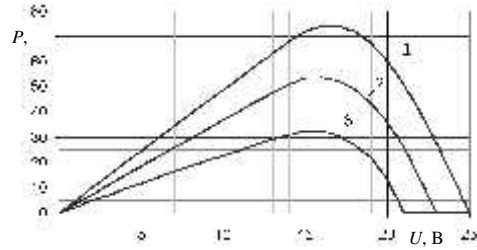


. . . , . - , . . .
 ,
 [1...3] -
 ,
 . () -
 ,
 1- : , -
 ; . -
 , -
 2- : , , 5 -
 . -
 3- : , , . -
 , . ,
 () ,
 .
 [3...5]. -
 , , -
 () [4, 6]. , -
 . -
 () [6...8]. -
 , , , -
 -
 (. 1), ,
 1 2 . -
 . 2 -
 . , -
 -

VT () [8].
 D (. 3),

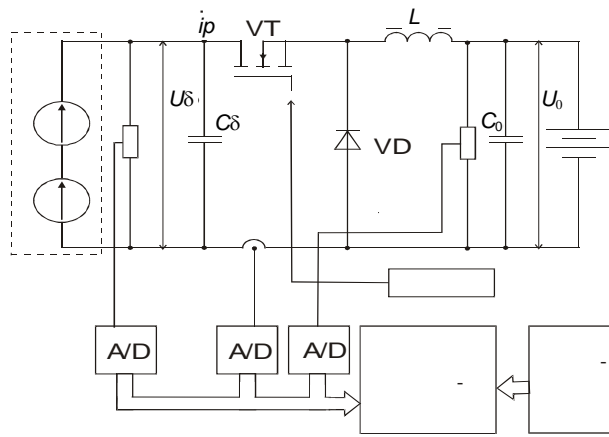


. 1.



. 2.

: 1 - 1000 / ²; 2 - 750; 3 - 500 / ²



. 3.

. 3.

. 10-

MOSFET,
VD

VT

($t \leq 150 \dots 200$).

Intel 8032

Intel 80196

16-

(z = 1).

$0 < \Delta \gamma < 1.$ D

U_0

$U,$

D

P_k

U_k

$I_k,$

P_k

$P_{k-1},$

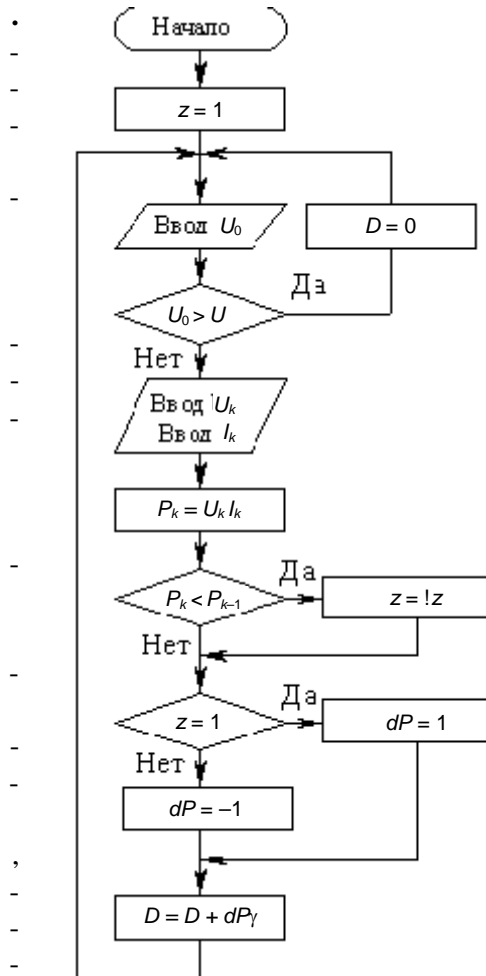
(z = !z).

$P_{k-1},$

++

```
bool z=true; //
int P, P1=0, U, I; //
double D=0, g=0.05;
void MVM() {
    while(true) {
        U=ReadU(); //
```

. 4.



. 4.

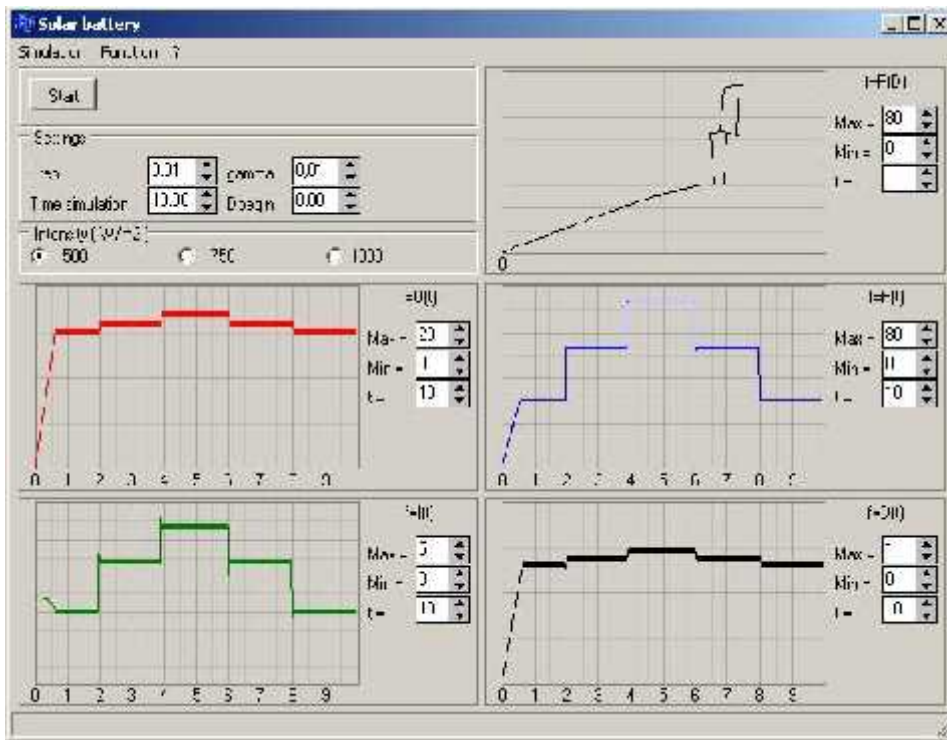
```

if(U<Um){           //           U
  I=ReadI();         //
  P=U*I;             //
  if(P<P1) z=!z;    //
  if(D && !P) z=false; //
  D+=g*(z? 1 : -1); //
  D=D>1? 1 : D;     //
  D=D<0? 0 : D;
  OutD(D);          //
  P1=P;             //
} else OutD(0);
}
}

```

.5

500...750 / ² 1000...750...500 / ².

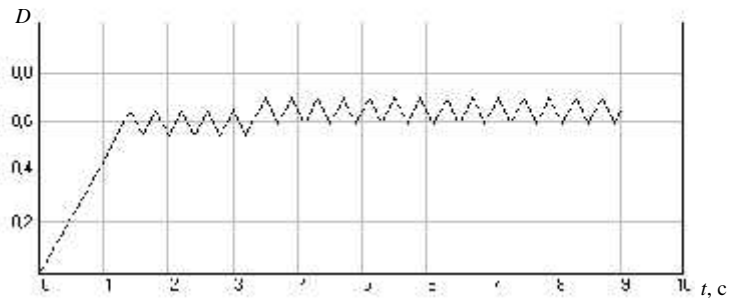
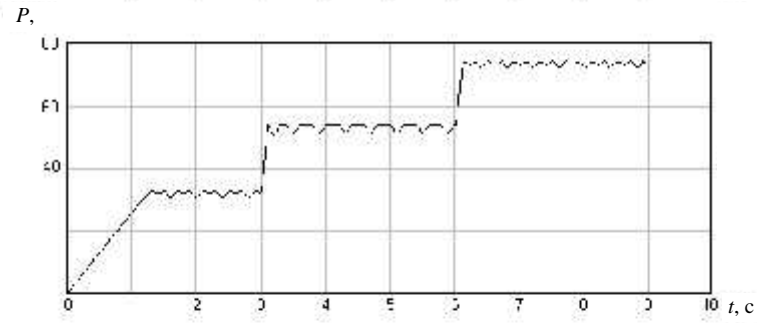
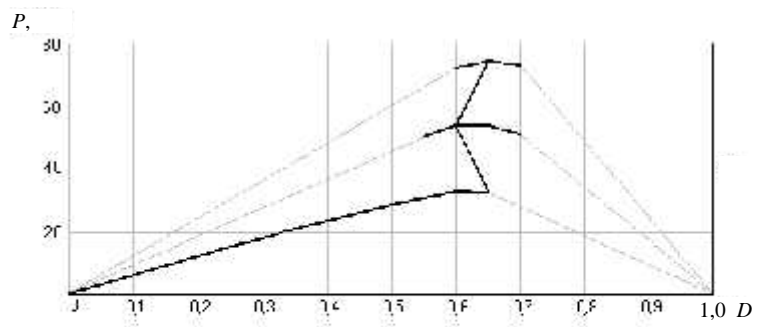


.5.

.4

.6,

$\Delta\gamma = 0,05.$
 $t = 3 \text{ c};$
 $t = 6 \text{ c}.$



. 6.

1.

2.

1.

2.

3. Stewen J. Strong, William G. Skeller. The Solar Electric House Sustainability Press, Still River, Mas. – 1993. – 276 p.

4.

2 //

« », 2003. – . 1. – . 124.

5. //

2002. – . 124.

6. // . – 2002. – 3.

7. K a s a N., I i d a T. and I w a r m o t o H. Maximum power point tracking with capacitor identifier for photovoltaic power system // IEE Proc.-Electr. Power Appl. – Vol. 147, No. 6. – November 2000. – . 497–502.

8. //

III
 24–25 2003 . – : «
 », 2003. – C. 221–223.

30.03.2005

621.315

()

50- . „ 1000 . –

()

1954 .

1960- . ()

()