

.1.

1. . – GB 50763-2012 // -
2. [ ] // - :  
<https://www.youtube.com/watch?v=c6NzcvCwWLC>. — : 14.02.2020. ( -  
.).

72.04.012+692.817.1

-  
ARCHITECTURAL AND COMPOSITIONAL ROLE  
FILLING OF DOOR OPENINGS IN THE SOLUTION OF THE FACADE

:

Abstract: The article considers the particular features of arranging the entrance apertures at the main façade of historical public and religious buildings, and the particular role of a door assembly unit and filling within the overall façade composition.

Keywords: door, door aperture, assembly unit, filling, facade, composition.

[1, . 152].

( , , ).

( ).

XVIII .

( , ).

).

( ,

- 1)
- 2)

3)

[2, .354].

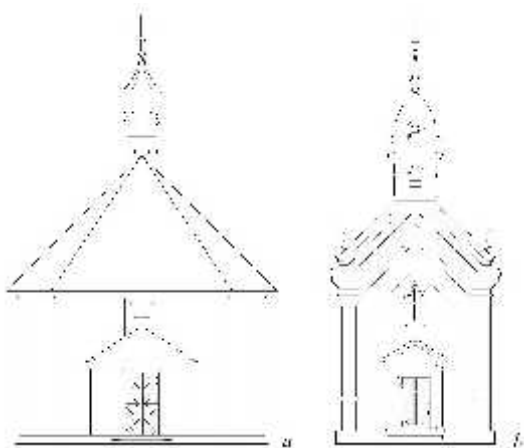
XIX .

1)

1871 .

2)

( .1-b)). ( .1- )) ( ( , .. ).



. 1.

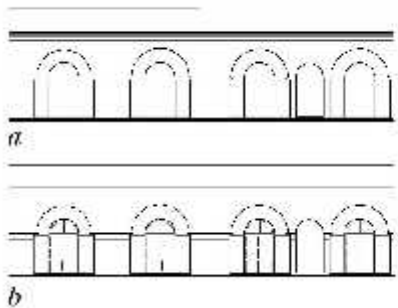
1787 .; b-

, 1850 .

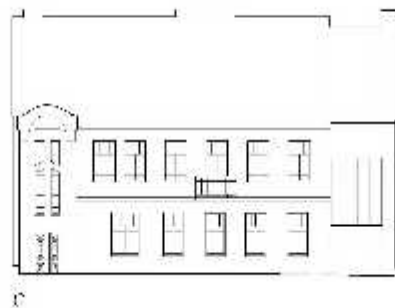
» [3, .155–156].

( .2-b).

( .2-a).

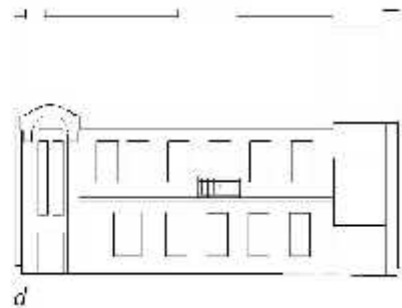


. 2.



: , b-

: c, d-



, XIX .,

;

(1899 .)

, 2

1. , . / . . - : - , 1984. - 224 .
2. , . . , / . . . - : - , 2020. - 448 .
3. , . . : / . . . - : . , 2015. - 208 .

728 (510.1-14)

### RAMMED EARTH RESIDENTIAL BUILDINGS IN YUNNAN PROVINCE

Abstract: Due to the unique climate and mountainous characteristics of Yunnan, ethnic minority people in some areas use soil as walls and wood as roofs to build traditional rammed earth buildings in Yunnan. This article combines modern materials and construction technology, residential architecture and artistic characteristics to analyze, so that it can better adapt to the sustainable development of residential buildings.

Keywords: rammed earth; residential buildings; development trends.

( ),

«  
» [1],